

For biological diversity & a beautiful
global environment

EMATEC

General Incorporated Foundation of Japan
Environmental Management & Technology Center



Outline of the Institute

Environmental Management and Technology Center was established in 1972 as a comprehensive institute for environmental management technology by Japanese Ministry of Economy-Trade and Industry, Osaka Prefecture Government, Osaka City Government and Osaka Chamber of Commerce.

Profile

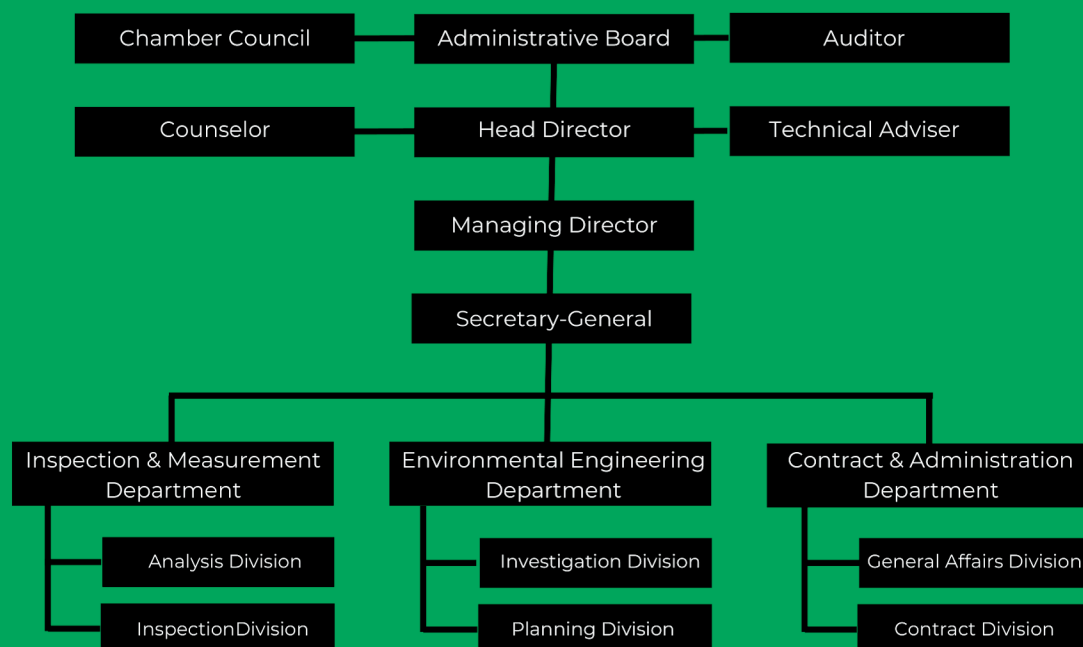
Name: Environmental Management and Technology Center (a.k.a.: EMATEC)

Established: October 1, 1972

Representative: Akira Kobayashi/ Head Director

Number of directors and employees: 55

EMATEC Organization CHART



MAIN Services

Environmental Investigation and Analysis

- Air pollution
- Water contamination
- Noise and Vibration
- Offensive odor
- Soil and Sediment contamination
- Dioxin and endocrine disrupter
- Asbestos sampling and analysis
- Agricultural chemicals
- Eutrophication in river, lake and sea
- Acid rain
- Sewage and Wastewater
- Industrial and domestic wastes
- Meteorological observation



Inspection and Measurement

- Drinking water quality inspection
- Small-scale water-supply system inspection
- Leaching test for Water supply equipments
- Working environment measurement
- Air environment measurement
- Radiation inspection
- Photocatalyst material evaluation



Environmental Impact Assessment and Environmental Management Planning

- Environmental assessment, forecast and measure (Industrial park, Large-scale retail store, Urban development, Waste disposal facility, etc.)
- Local environmental preparation plan

Environmental Monitoring and Assessment

- Design and construction of environmental surveillance system for Post-survey of assessment: Installation of monitoring building and automatic measuring equipments (air pollution, noise and vibration, etc.),daily measurement and maintenance, data analysis, etc.)
- Monitoring riverine environment (water and sediment quality, aquatic organism, etc.)
- Maintenance of automatic water quality observation equipments for sewage-treated water



Consulting Services

- Consulting for soil contamination countermeasures
- Planning for waste disposal system and facility
- Recycling of resources
- Consulting for environmental management



Public Services and Others

- Publication of the environmental information magazine “EMATEC”
- Environmental free consultation services
- Seminar related with environment



“EMATEC”



Lecture class for trainee from JICA by EMATEC



Seminar on waste-water treatment technology for Asian Countries by EMATEC & Ministry of the Environment

Contact



General Incorporated Foundation of Japan
Environmental Management & Technology Center

Address: 9-10, Kawaguchi 2-chome, Nishi-ku, Osaka 550-0021, JAPAN

Phone: +81-6-583-3262

FAX : +81-6-583-3274

URL : <https://www.ematec.or.jp>

E-mail : kansai_kikaku@ematec.or.jp



Google MAP



WEB



August, 2022